



UOB Art Explorer

Art At Home



Tutorial 2 : Floral Drawing

Step-by-step guide to learn floral drawing techniques using oil pastels

In partnership with UOB Painting of the Year winning artists





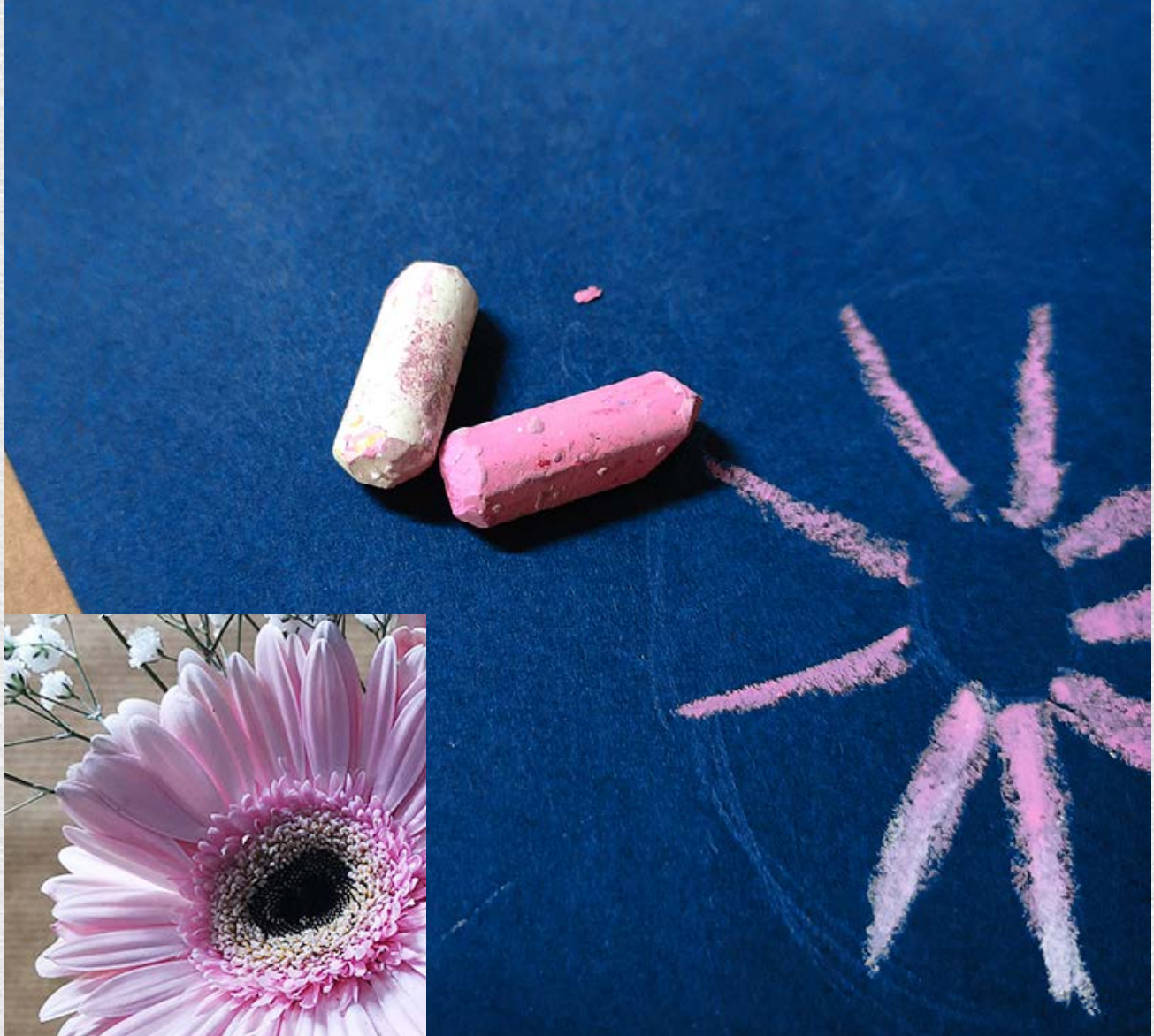
Materials required: Gerberas, Baby's Breath, Oil Pastels, Pencil, Eraser and Dark Coloured Paper.



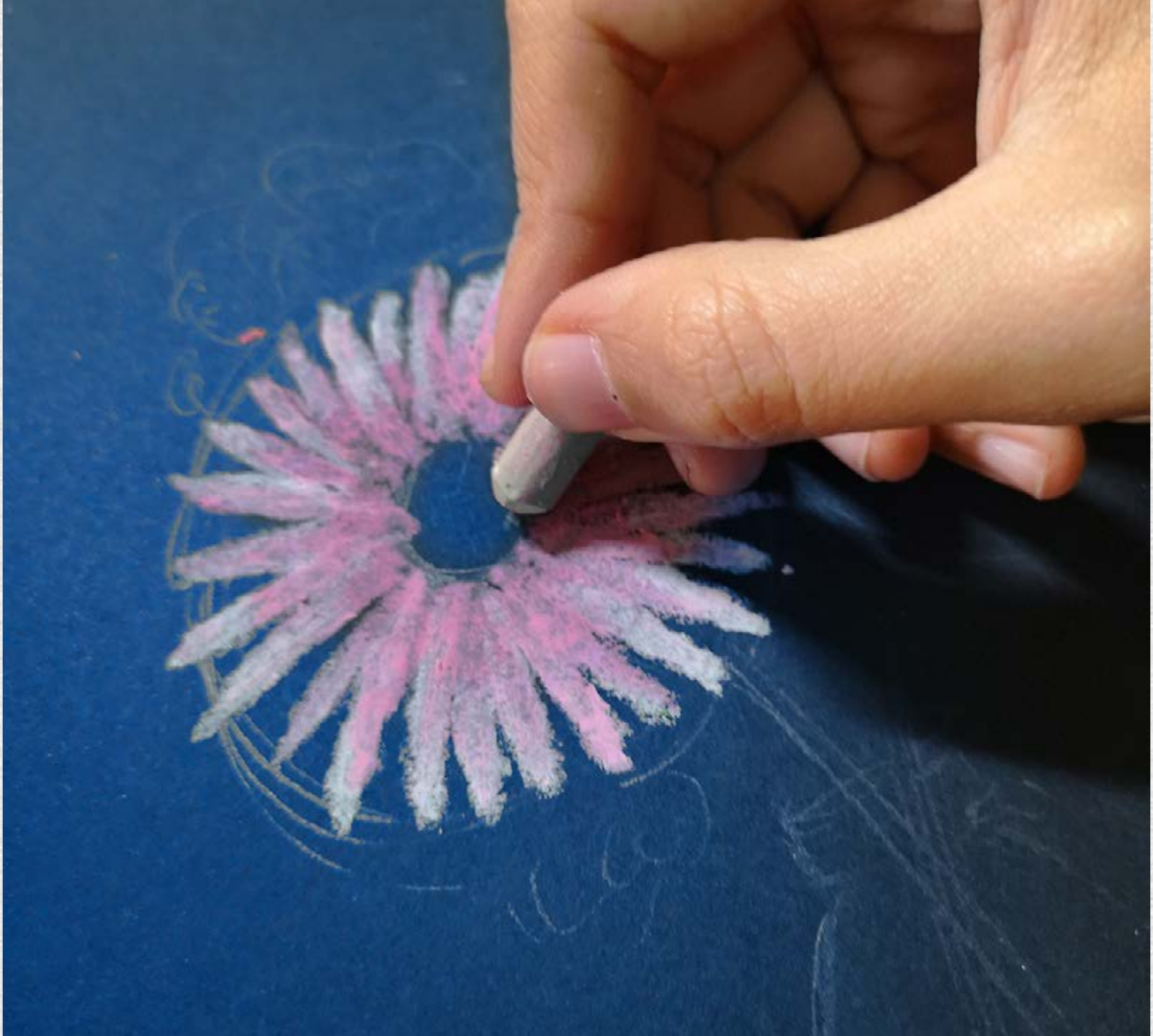
Arrange the flowers in a vase.



Use a pencil to sketch lightly the basic outline with lines to represent the flower petals. You do not need to go into details.



Next, look at the colours of your flowers and select the oil pastels with similar colours (pink and white). Observe its tones and shades. Start with a pink oil pastel to draw in the direction of the petals using short strokes.



Layer the petal tips with a white oil pastel. Take note on where the light comes from and layer on accordingly. You do not need to go into too much details as we are going for a loose still life effect.



Look at the flower pollen. By using the dotting technique, add in the lightest colour (e.g. yellow/white) first, followed by the darker colours (e.g. brown/black) for the flower pollen.



Repeat the same steps for the second flower. Take note on where the light is coming from and the direction of the petals. Adjust accordingly.



Next, add in the Baby's Breath. Use a white oil pastel to create tiny circles to shape out the Baby's Breath. Be creative, you do not need to draw the exact location of the Baby's Breath.



Use the pointed part of the green oil pastel to draw the stems of the Baby's Breath lightly.



Use a green oil pastel to draw the stems of the flowers.



Use a white oil pastel to draw the outline of your vase. Create the reflection of your vase using white and black oil pastels.



You may add more Baby's Breath to balance the composition of the artwork. Feel free to add in your personal touches. Erase the pencil sketches.



Three important tips:

- 1 Sketch loosely from bigger to smaller shapes
- 2 Adjust the angle of your oil pastel to get a pointed tip while colouring
- 3 While blending, ensure that the second colour overlaps with the first colour to achieve a seamless blend



Shirly Koh

**2016 UOB Painting of the Year (Singapore)
Silver Award, Emerging Artist Category**

Shirly Koh is an artist and art educator. She is interested in how everyday objects (i.e. windows, escalators, barriers, etc.) which are visually prominent in our urban environment blend into the background after an extended period in the same space. In her works, she depicts how these objects might seem dull but are a part of the urban space, reflecting the way we react to our surrounding environment.

Ms Koh graduated from LASALLE College of the Arts in 2016 with a Bachelor's Degree in Fine Arts (Honours) and is a recipient of the Chan Davies Art Prize 2016, Noise Singapore Award 2015 and LASALLE Future Leader Scholarship 2013.