

CYBER SAFETY

FEATURING:

THE
DEFENDERS
OF
CYBER SPACE

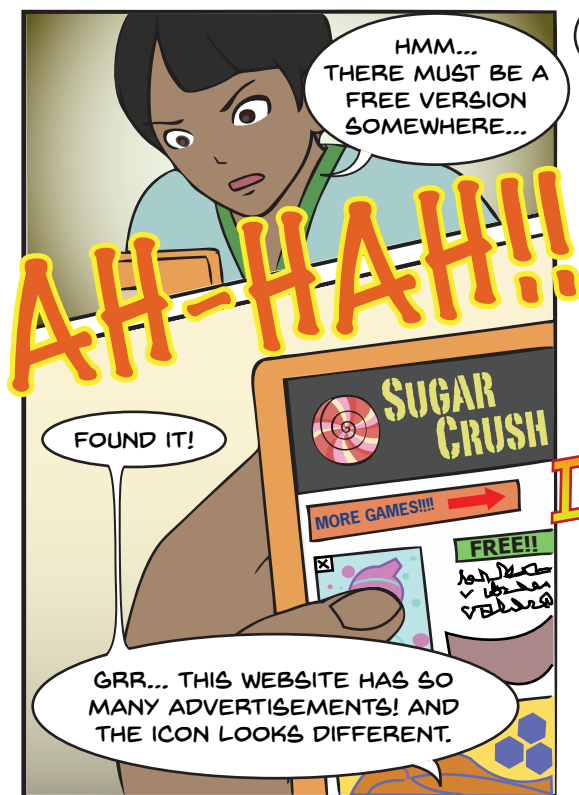
CRYPTO

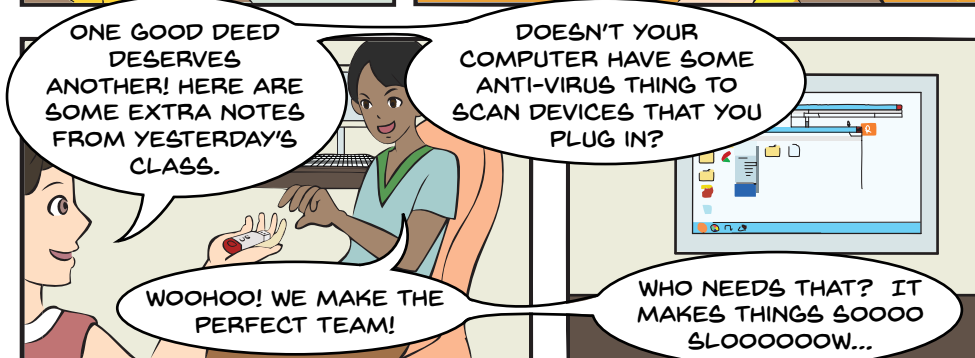
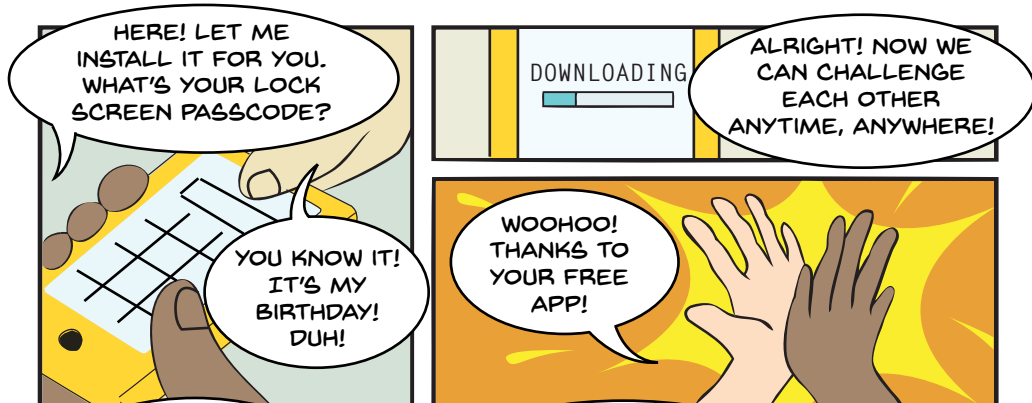
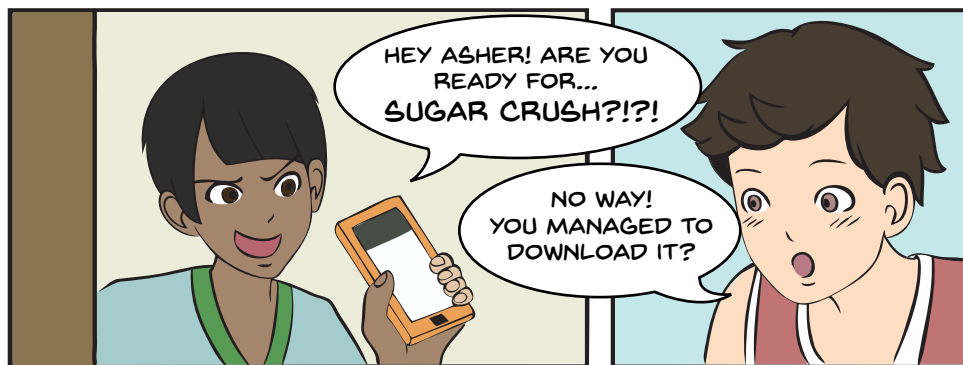
SYNTHIA

ISSUE
1

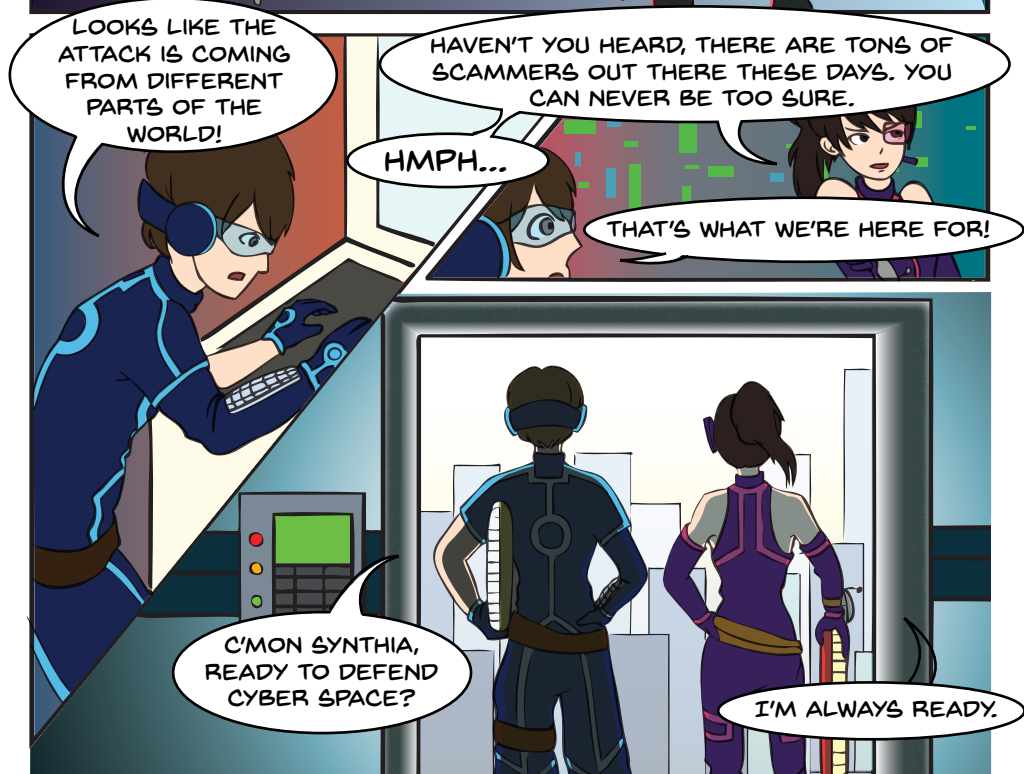
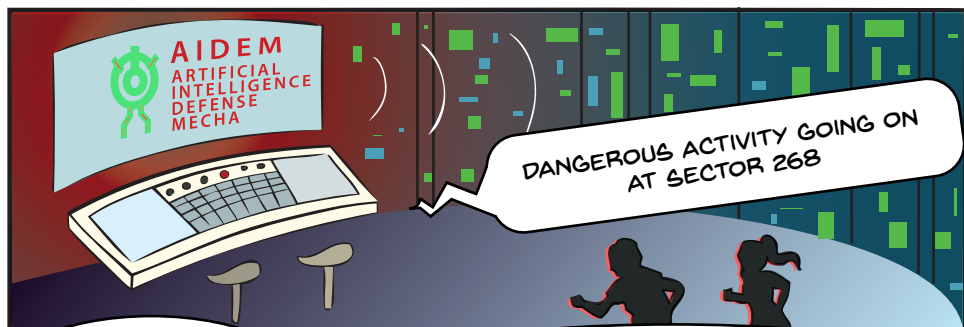
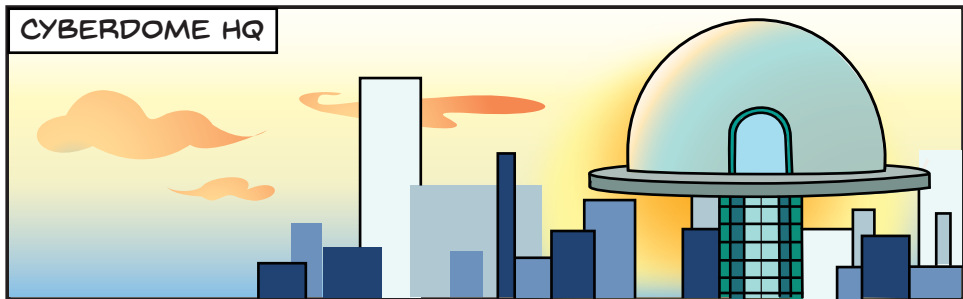


KAMAL'S HOUSE

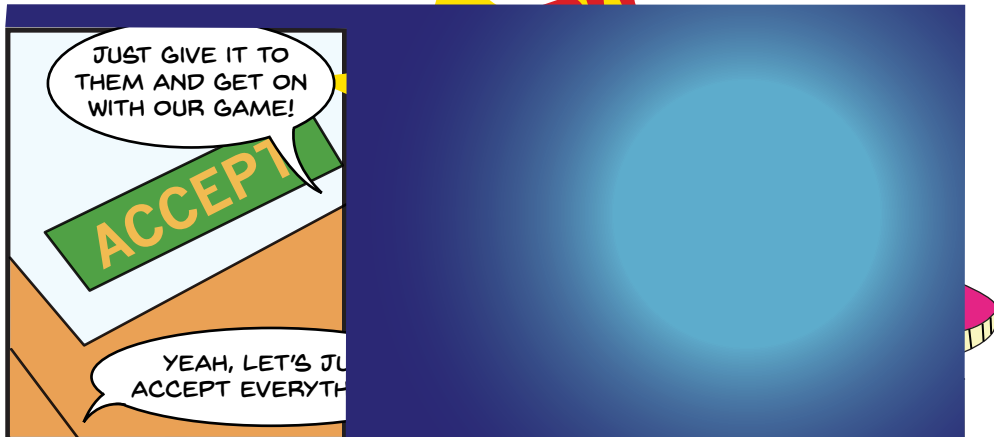
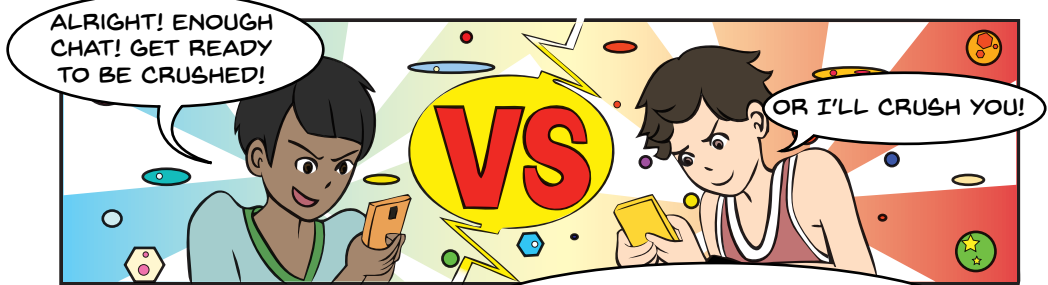
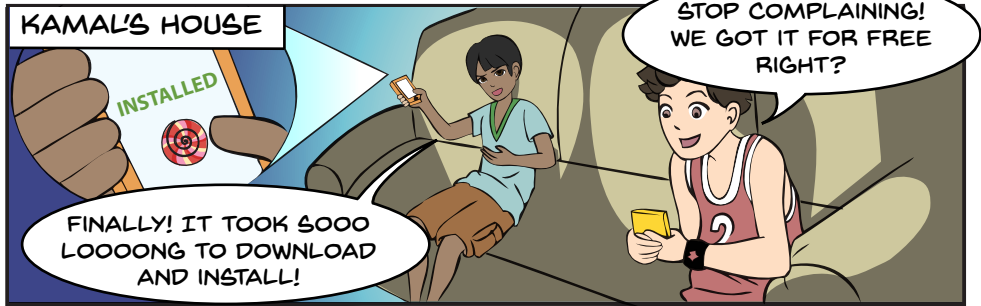


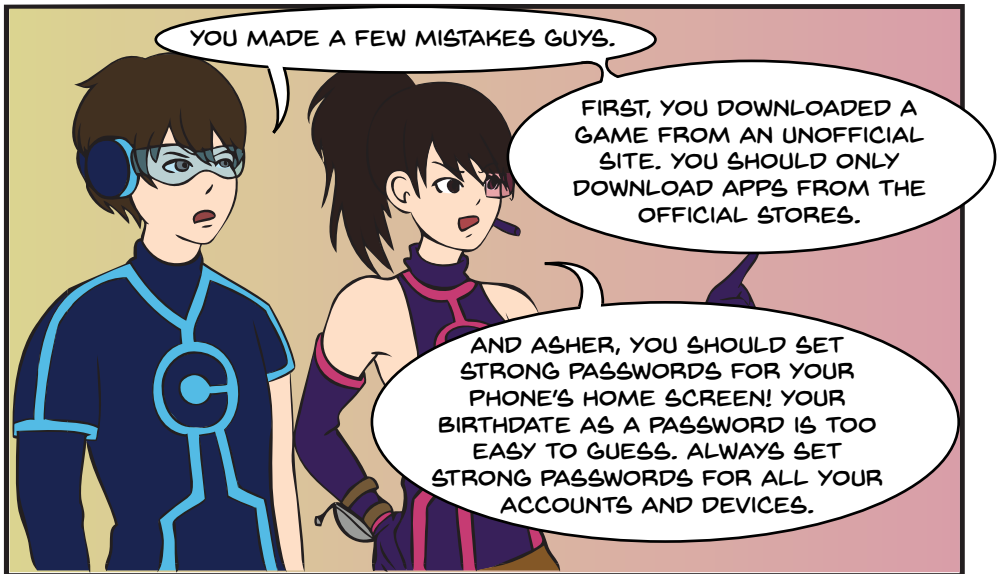
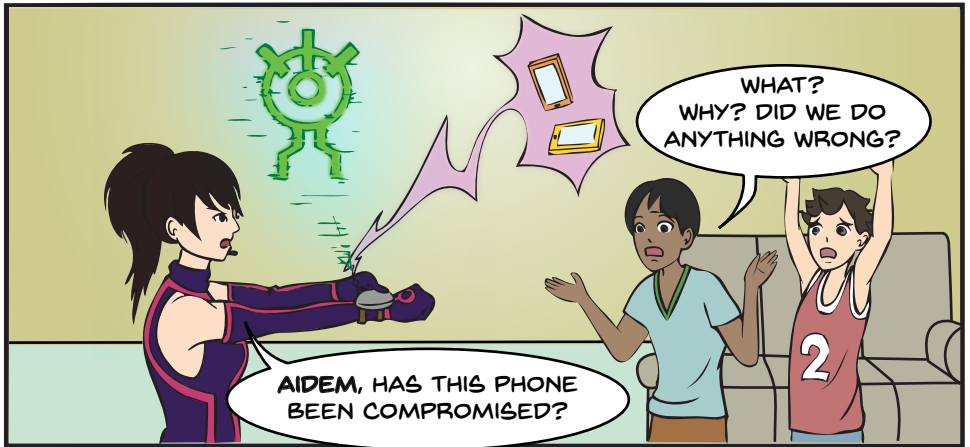
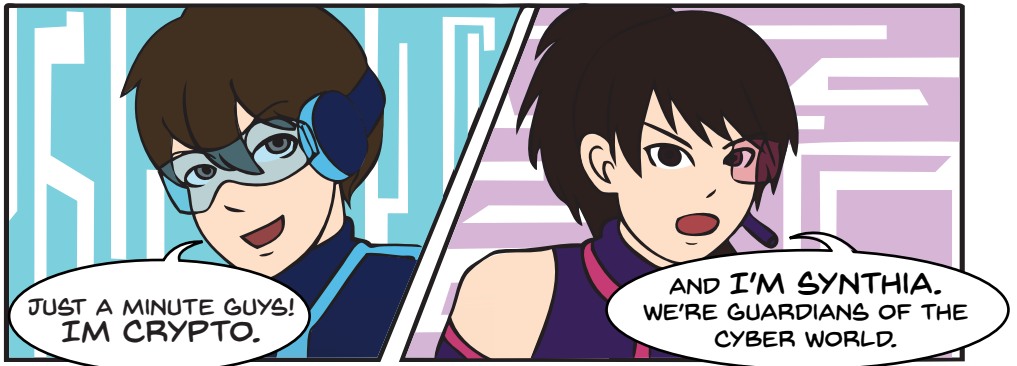


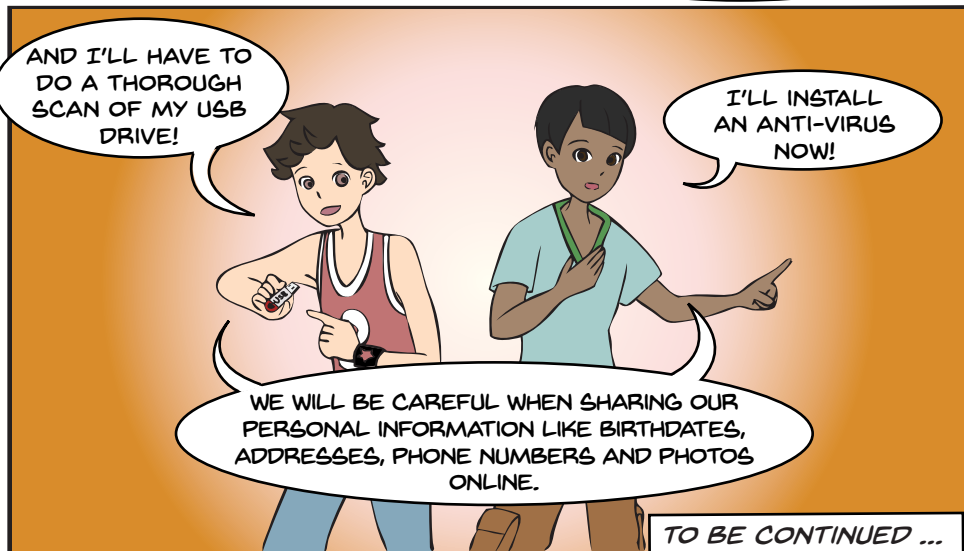
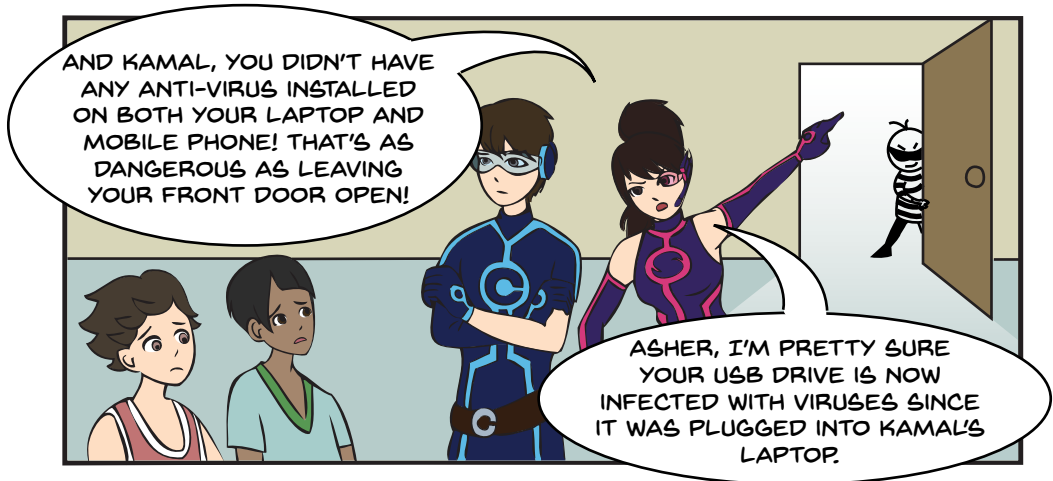
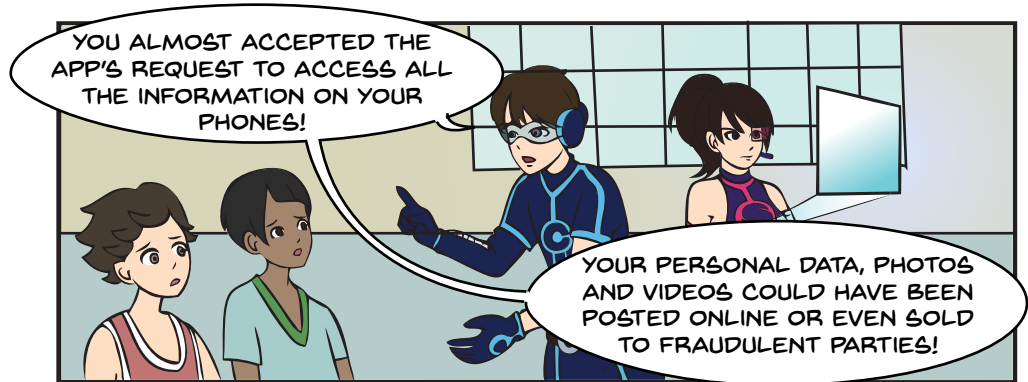
CYBERDOME HQ











CRYPTOGRAPHY

A STRONG PASSWORD CONSISTS OF...

Use the letters assigned to the numbers
to find out what you should include to
create a strong password!

19 25 13 2 15 12 19

14 21 13 2 5 18 19

12 15 23 5 18 3 1 19 5

21 16 16 5 18 3 1 19 5



A	B	C	D	E	F	G
1	2	3	4	5	6	7
H	I	J	K	L	M	N
8	9	10	11	12	13	14
O	P	Q	R	S	T	U
15	16	17	18	19	20	21
V	W	X	Y	Z		
22	23	24	25	26		

Spot The Difference

Can you spot 8 differences between the real App Store and the bogus store?



Authentic App Store



Bogus App Store

Scenario 1

You receive an email with the subject heading “photos from last Friday’s party” from your friend. However, you did not attend a party last week. When you open the email, your name appears right at the top of the email and you see an attachment. What should you do?

Discussion pointers for parents

- What are the telltale signs of phishing emails?
- What other steps should be taken before you click on email attachments or hyperlinks?

<https://www.csa.gov.sg/gosafeonline/go-safe-for-me>

Scenario 2

Nicole’s parents notice that she has been using a mobile phone app called “Find a Friend Nearby”, where users can chat with other online users nearby. Nicole’s parents note that she has been chatting frequently with another user, Ash49, on the app, and sharing information such as home address and school details. Furthermore, the app has access to her location and does not have a data protection policy in place.

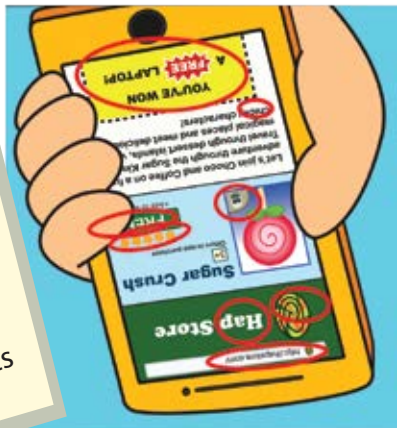
Discussion pointers for parents

- What types of information would be considered as “too personal” and should not be openly shared with online parties?
- How can you find out if a mobile phone app has a data protection policy?
- Why is it important to ensure that the apps you use have a data protection policy?

<https://www.pdpc.gov.sg/resources/for-individuals>



**PARENT
CHILD
ACTIVITY**
Discuss the above
scenarios with your parents



Page 8 & 9 answers:
A strong password
consists of ...
symbols
lowercase
uppercase

Brought to you by :



<https://www.csa.gov.sg>



<https://www.pdpc.gov.sg>

Special thanks to the Ministry of Education